

Geowell is a company thinking of environment



DAEKEUM
GEO WELL

AUTOMATIC
WHEEL WAHSING SYSTEM
GX200C
GX200, 400, 600
GX 200, 400, 600 mobile

DAEKEUM
GEO WELL

DAEKEUM GEOWELL. CO., LTD.

38, Janggogae-ro 92beon-gil, Michuhol-gu, Incheon, Republic of Korea

Tel : + 82 32 874 0133 Fax : + 82 32 874 0250

E-mail : sales@geowell.co.kr Website : www.geowell.co.kr

www.geowell.co.kr

Since 1957, the reliable partner of equipment manufacturers

Management Philosophy

Each of Geowell members is a source of the quality, innovation and performance that makes Geowell unique and successful. People are able to learn, improve, change and grow in order to make his/her best possible contribution.

Every employee is capable of faithfully and passionately doing their best to satisfy our customer's need. To meet our customer's need better than anyone else is the way we profitably grow our business and then share in its reward among our shareholders and Geowell people.

Geowell is the pleasant place to work in. Geowell, with its proud history, engages proactively in endless challenges and passions in order to step ahead in the industry we serve. Geowell's success contribute to enhance our national prosperity

GEOWELL MISSION

- To be the leader, we must exceed our customer's expectations.
- Each of us will know our customer's needs and responds quickly to them.
- Each of us will make it easy and enjoyable to do business with us.
- Each of us will do things right the first time. Each of us will treat one another as customers.
- Each of us will provide value in everything we do.



DAEKEUM GEOWELL is
inviting partners
who want to participate in our global networks.



Our Company is...

Since it was founded in 1957, DAEKEUM GEOWELL Co., Ltd. developed and introduced the automatic wheel washer for the first time in Korea in 1991. Until 2012, the company supplied more than 20,000 wheel washers to 25 countries in the world including Korea and suggested the best solutions for improving environment of various working sites.

Our company; Daekeum Geowell is headquartered in South of Korea. Our own ISO14001, 9001 - Certified production facilities in the Incheon(Korea), Um-sung factory(Korea), China guarantee the consistently high quality of our products. This catalogue provides an overview of our wide range of products. Please contact to our specialists if you need help to get further information. Thanks to more than 50 years of experience, our goal is to have our customer want to come back again and again for our high quality products, best service, unique solutions, and timely response.

Daekeum Geowell CEO Lee Seung Woo




Table of Contents

Daekeum Geowell

We are Manufacturer	2~3
Our Company is/table of contents	4~5
Why GEOWELL Wash?	6
How to operate GEOWELL WASH?	7

Wheel Wash System

GX200C	8~9
GX Mobile	10~11
GW Series	12~13
Options	14~15
Spec book	16~17
Applications of Wheel Wash system	18

Why GEOWELL Wash?

1. Save Your Labor cost

GEOWELL WASH is operated by itself, You don't need to anybody who working at the entrance for washing! It means that you can save the labor cost!



2. Save Your Time and Money

The necessary time for washing a truck is just 20 seconds!
It means that you can save your money using truck wheel washer



3. Prevention of air pollution by controlling scattering dusts

It is one of the major problem for the residents living nearby construction field with construction noise and vibration.
The scattering dusts can inflict a considerable damage to physical, spiritual discomfort to neighboring peoples.



Before

4. To keep the environments and roads clean

By installing GEOWELL WASH at your site, you can keep your site clean.
And also, you can prevent what the road connecting your site is being dirty.



After

How to operate GEOWELL WASH?

STEP 1



SENSOR THE VEHICLE

- Move the vehicle to the point of sensors.
- Wait for 3-4 seconds in front of washing system so that the sensor can sense the vehicle.

STEP 2



WHEEL WASHING

- When the nozzles start to spray water, move the vehicle slowly onto the washing system.
- Keep the speed of 5km/h.
- If the vehicle is heavily polluted, you can repeat the washing by backing the vehicle and making a re-entry.

STEP 3



FINISH WASHING AND EXIT

- When the washing is finished, you can drive out of the washing system to the road.
- Never try to control steering wheel because a collision is a possibility until you get clear of the washing system completely.
- When the washing system stops spraying, compressed air of the air compressor will be automatically released onto the pump screen and remove the foreign substance for a pre-programmed time before the scraper activates to discharge the sludge from the washing system.



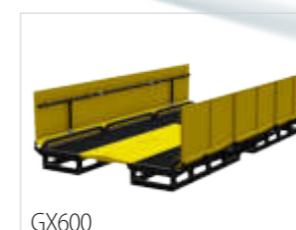
GX200



GX200C



GX400



GX600

GEOWELL Standard Product

Geowell standard products are included GX 200C, GX 200, GX 400, GX 600. Thanks to its outstanding design, high reliability and the safety features, satisfying International safety standards has made it as a representative model of Geowell standard products. Our fully automated and totally self-sufficient Geowell wash is perfect for construction site where sticky clay and mud should be a big problem. Our truck washer specialists recommend Geowell standard products for road constructional sites, Quarries, concrete plants, civil engineering sites, Excavation, landfill sites, etc.

- Installation: ★★★★★
- Permanent: ★★★★★
- Customizing: ★★★★★
- Performance: ★★★★★
- Water Recycling: ★★★★★



GX200W



GX200CW



GX400W



GX600W

GEOWELL Wide product

Geowell Wide Products are included GX 200C wide, GX 200 wide, GX 400wide, GX 600 wide. Geowell Wide Products are same design and same performance between standard product. However, the super different point is, Geowell wide products are especially designed for the work sites with heavy traffic volume and for the huge work sites to use huge mining trucks. Our truck washer specialists recommend Geowell wide products for huge quarries, huge mining site, landfill site.

- Installation: ★★★★★
- Permanent: ★★★★★
- Customizing: ★★★★★
- Performance: ★★★★★
- Water Recycling: ★★★★★



GX200M



GX400M



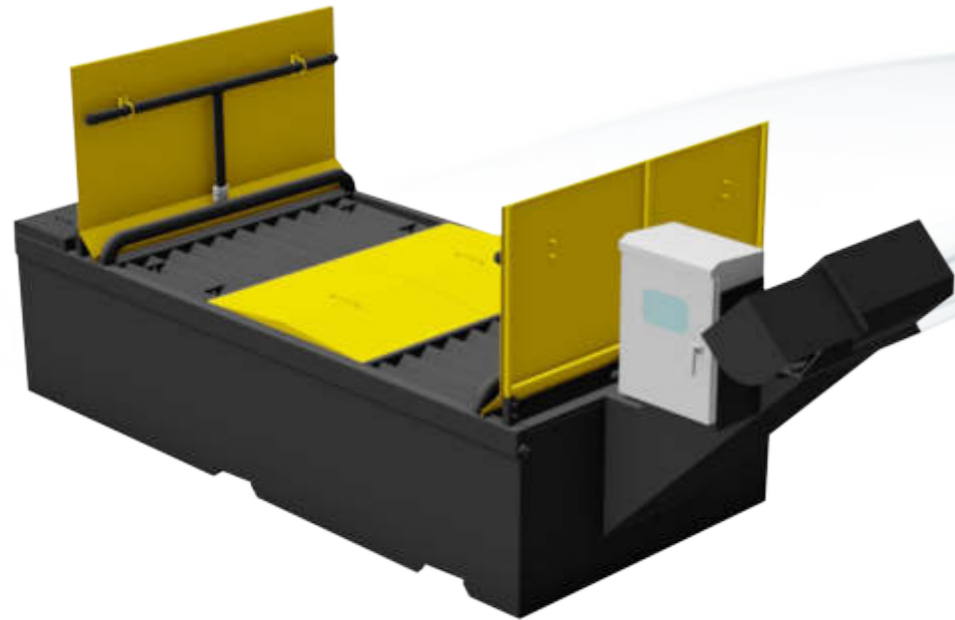
GX600M

GEOWELL Mobile Product

Geowell Mobile Products are included GX200 Mobile, GX 400 Mobile, GX 600 Mobile. Geowell mobile products are designed easy installation without excavation work. The Geowell Mobile product are consist of Main Frame, Water tank, Ramps. Geowell mobile product are willing to help for your business with one part. Our truck washer specialists recommend Geowell Mobile product for short term period construction site and rental business, small-scale construction site.

- Installation: ★★★★★
- Permanent: ★★★★★
- Customizing: ★★★★★
- Performance: ★★★★★
- Water Recycling: ★★★★★

GEOWELL WASH – GX200C, Wide

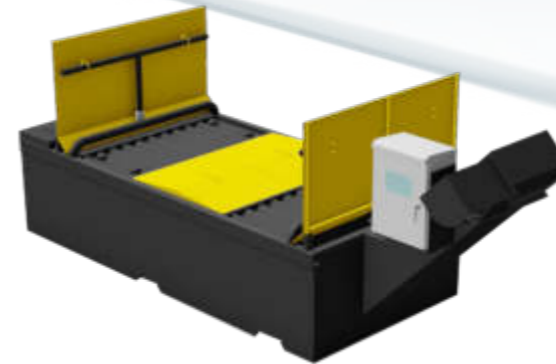


GX200C Geowell Wash is Daekeum Geowell's most popular Tire Wash System throughout the world. Thanks to its outstanding design, high reliability and the safety features, satisfying International safety standards has made it as a representative model of Geowell Wash. Our fully automated and totally self-sufficient Geowell wash is perfect for construction site where sticky clay and mud should be a big problem. GX200C which combined between frame and water recycling tank is super advantage. So it is possible for easy installation with 4 lifting lugs. Its various options and extensibility allows the customizing of the model for a unique site as well as general sites.

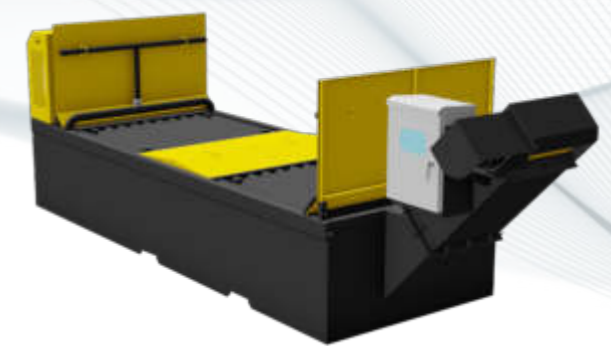
ADVANTAGES

Automatic sludge discharge by conveyor system	Easy installation & withdrawal
Checks washing time by a counter	Simple & durable frame structure
Automatic operation using a photo sensor	Low maintenance cost
Easy to move with its 4 lifting lugs	Recycling used water

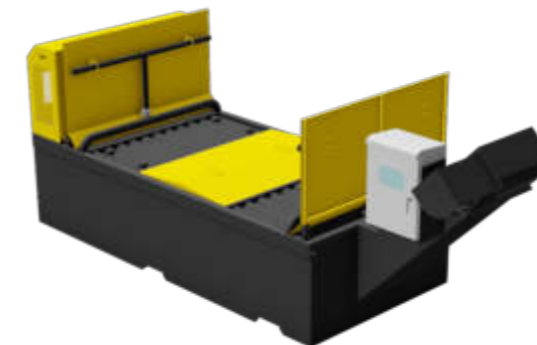
OPTION TYPE



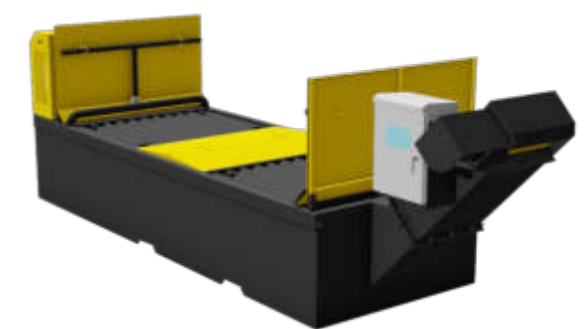
GX200C



GX200C wide



GX200C with Air Compressor

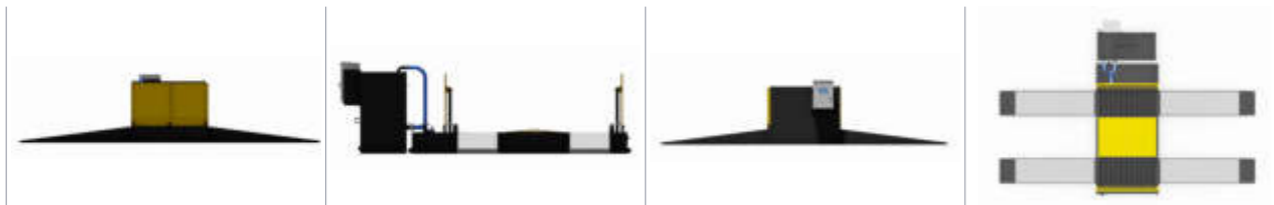
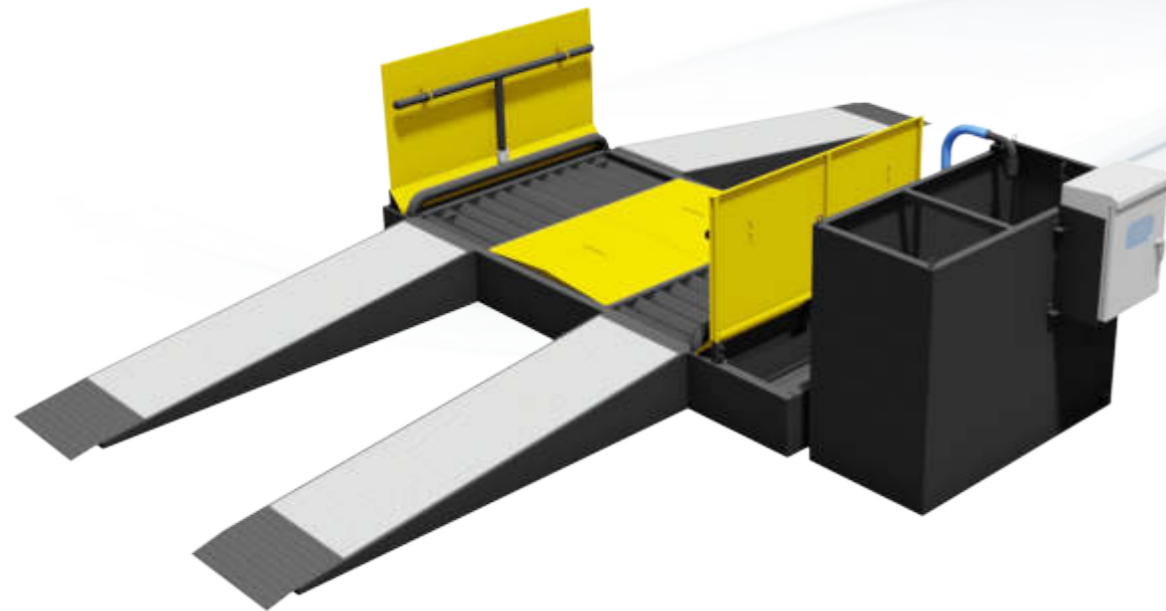


GX200C wide with Air Compressor

SPECIFICATIONS

	GX200 C	GX200C Wide
SIZE	W5572 X L 1930 X H2144	W4570 X L 1939 X 1544
CAPACITY	WIDTH OF TRUCK MAX, 2500mm	WIDTH OF TRUCK MAX, 3500mm
SUBMERSIBLE PUMP	5.5Kw	11 Kw
SCRAPER DRIVE MOTOR	0.75Kw	0.75Kw
SENSOR	PHOTO SENSOR	PHOTO SENSOR
WATER TANK	5000Liters	8000Liters

GEOWELL WASH Mobile series -GX 200, 400, 600 Mobile

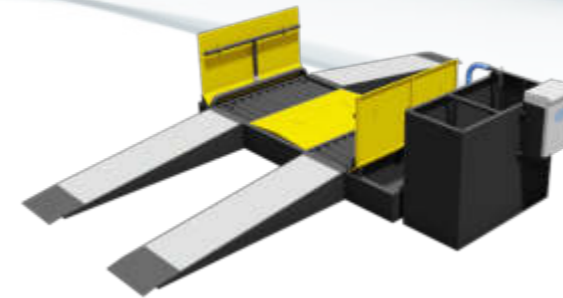


This construction sites that have to move vehicle entrance/exit frequently, or the small-scale sites whose work schedule is short or whose traffic is low, or the sites that do not allow excavation. Structural simplicity, easy installation plus little mishaps provides an advantage to leasing business firms. You can opt for hot-dip galvanized model for a better durability. Simple-structure wheel washing system is specially intended for those road.

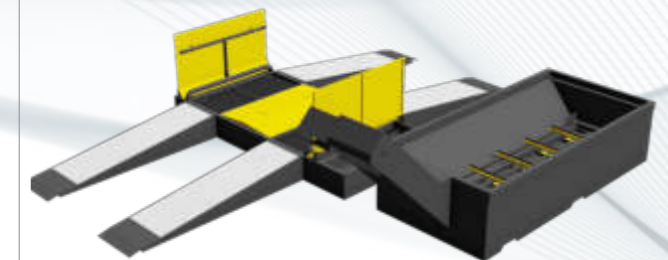
ADVANTAGES

Checks washing time by a counter	Attachable water tank & Ramps
Automatic operation using a photo sensor	Low maintenance cost
Easy to move with its 4 lifting lugs	Recycling used water
No need foundation	Easy installation

OPTION TYPE



GX200 Mobile



GX200 Mobile with C-tank



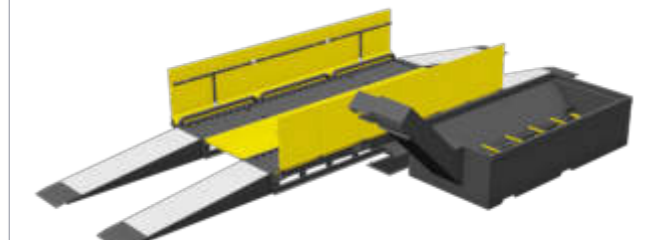
GX400 Mobile with Water tank



GX400 Mobile with C-tank



GX 600 Mobile with Water Tank



GX600 Mobile with C-tank

SPECIFICATIONS

	GX200 Mobile	GX400 Mobile	GX600 Mobile
SIZE	W5452 X L7939 X H1756	W3410XL9860XH1544	W3410XL11970XH1544
CAPACITY	MAX, 2500mm	MAX, 2500mm	MAX, 2500mm
SUBMERSIBLE PUMP	5.5Kw	11Kw	15 Kw
FEEDBACK PUMP	1.5Kw	5.5KW	5.5KW
SENSOR	PHOTO SENSOR	PHOTO SENSOR	PHOTO SENSOR
WATER TANK	2200Liters	Option	Option

GEOWELL WASH – GX200, 400, 600

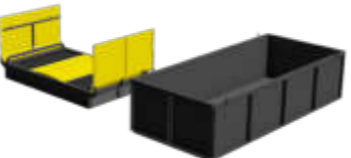
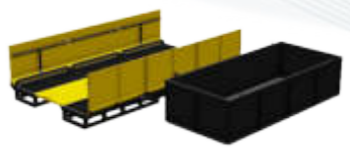
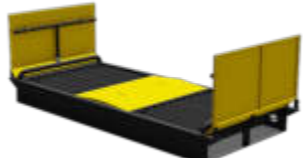


It is module-type wheel washing system, which can be easily customized to the needs of a particular site by utilizing its various options and its wide flexibility. Scores of different ways of installation are possible by applying various types of pumps and water tanks. The engineers of GEOWELL can offer a customized system as well as technical advice to meet your site requirements. It is suitable for medium or large scale sites whose traffic is heavy and designed to withstand hard working condition. There are options of 4M and 6M length and three dimensional setting of the nozzles ensures the perfect washing of the vehicles that carry heavy dirt.

ADVANTAGES

Attachable conveyor tank	Checks washing times with a counter
Serially extendable main frame	Versatile application with modular structure
Various pump options	Maximizes durability with Hot galvanizing
Maximizes washing of all tire surfaces	Automatic operation with photo sensor

OPTION TYPE

		
GX200 frame	GX400 frame	GX600 frame
		
GX200 with water tank	GX400 with water tank	GX600 with water tank
		
GX200 with water C tank	GX400 with water C tank	GX600 with water C tank
		
GX200 wide	GX400 wide	GX600 wide

SPECIFICATIONS

	GX200	GX400	GX600
SIZE	W3410 X L1940 X H1544	W3410 X L3860 X H1544	W3410 X L5790 X H1544
CAPACITY	MAX, 2500mm	MAX, 2500mm	MAX, 2500mm
SUBMERSIBLE PUMP	5.5Kw	11Kw	15 Kw
FEEDBACK PUMP	1.5kw	5.5KW	5.5KW
SENSOR	PHOTO SENSOR	PHOTO SENSOR	PHOTO SENSOR
WATER TANK	Option	Option	Option

GEOWELL S01EX



It is the best-selling roll-type wheel washing system which DAEKEUM GEOWELL developed for the first time in Korea. More than 3,000 units of them have been produced since 1991 and still enjoy a great popularity in many sites due to its reliability and durability.

ECONO Model Econo type is a simple and economical wheel washing system for essential functions.

This is suitable for those customers ;

- Whose budget is limited.
- Who don't need a high grade washing system.
- Whose site does not have enough space for its installation.

ADVANTAGES

Structure reinforcement for a long term use	Easy to move with its 4 lifting lugs
Application of fine quality components	Emergency stop button
Automatic sludge discharge by conveyor system	Recycling used water
Checks washing time by a counter	Stainless steel control panel case (IP65)
Maximizes user's safety by using a pedal type sensor	Forced roller drive with a 3.7Kw geared motor

DESCRIPTIONS	SPECIFICATIONS
Dimension	W2,200 x L5,340 x H2,047 (mm)
Applicable vehicle	Width of truck Max. 2,800mm
Power consumption	19.5 Kw/h
Gross weight	4,600 Kg
Sensing	Limit Switch
Submersible pump	15Kw x 380/460V x 3Ø x 50/60Hz (Horizontal)
Roller drive motor	3.7Kw x 380/460V x 3Ø x 50/60Hz
Scraper drive motor	0.75Kw x 380/460V x 3Ø x 50/60Hz
Water jet pressure	3.0~3.5 kg/cm ²
Main power	380/460V x 3Ø x 50/60Hz
Water tank volume	6,000 Liters
Washing capacity	About 250-300 Vehicles/Day
Nozzle	Side pipe - 18 pcs, Main frame - 56 holes
Side pipe	2 inches x 560mm(H)
Pipe linking	2 inches - Union type
Control panel	Stainless Steel(SUS 304) / Dual door
Side screen (option)	1 layer {Total 1.5m (H)}

The above information can be changed.

HOW TO WASH THE WHEELS : ROLL TYPE



Step 01

Entry :
A car enters slowly into the wheel washer with a speed of 5 km/h.



Step 02

Washing front wheels :
After entering, locate the front wheels (the 1st and 2nd axles) between the rollers of the washer and change the gear to neutral position. It will then automatically start to wash.



Step 03

Washing rear wheels :
In the same way as the front wheels, wash them in the sequence of the 3rd and 4th axles.



Step 04

Exit:
After washing, slowly exit from the washer and advance to the road.

OPTIONS

AIR COMPRESSOR



Compressed air is ejected through the built-in tube in the pump screen. All sorts of dregs clinging on to the surface of screen will be automatically removed by high pressure air. This system will increase the life and durability of pumps more than three times as a maximum.

SCREEN FILTER



Pump Screen is adopted to prevent various floating matters and dregs from wearing out the pumps and making them less durable. It is so sharply designed that the dregs on the screen surface may be shredded into small fragment while they are being sucked into pumps

PANEL



The application of KS marked control panel and the installation of an exclusive circuit breaker for each power unit, independently from the main breaker, ensures power shut-off function. The use of stainless panel case of double door type protects the panel from humidity, harsh environment and getting rusty.

1. Water Resistant Level: IP55, IP65, IP66,
2. Steel panel/Stainless Panel
3. Korean Standard Electrical parts/CE Standard electrical parts
4. Soft-starter options
5. Application of waterproof emergency stop button

SUBMERSIBLE PUMP



Various kinds of water pumps Geowell-Wash adopted have an high efficiency and durability. They are functioning superbly even in a harsh environment generating a great deal of sludge.

They are very useful for other purposes as well
Upgrade your pump
5.5kw pump, 11kw pump, 15kw pump

HEATER



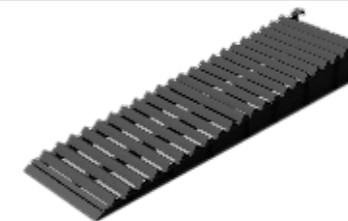
Heating system is needed to prevent non-working of the washing system or any damage to be caused by freezing in the wintertime. It activates automatically when air temperature goes down below minus 10degrees (adjustable) which it measures automatically.

FLOCCULANT INJECTOR



It is a device to inject liquid-type precipitator into water tank to help the sedimentation of the floating matters of washing water. It is activated automatically by Control Panel.

RAMP



Ramps are available for the sites where excavation is not allowed for concrete foundation work, or if you need them to facilitate the entry/exit of a vehicle

MAGNETIC SENSOR



Magnetic sensor is an equipment used to discover the distance or presence of vehicles. It can adjust the detection distance up to 2 meters. When a magnetic sensor detects a vehicle, the wheel washer system automatically starts operation. General magnetic sensor are available as an option.

CONVEYOR TANK & WATER TANK



The water tank is equipped with conveyor system which can discharge sludge automatically. You can install it at the side of or at the bottom of the washer because it is easy-to-move. Its on-meter-wide scraper provides an excellent performance of sludge disposal.

Also, we can design and manufacture water tanks to any of the sizes customer orders.

APPLICATIONS OF WHEEL WASH SYSTEM

GEOWELL - WASH has a wide range of applications based on its types and site condition.

- Heavy traffic sites - Construction sites
- Quarry & Mining - Industrial facility located far away from the city center



BRIDGE 400 / Quarry



G03 / Urban Demolition



G01 / Construction



G01 / Road work



BRIDGE 600 / Landfill



BRIDGE 600 Mobile / Industrial facility



QUALITY MANAGEMENT

GEOWELL, from the customer's standpoint, looks into the critical factors to quality and enriches the products to the satisfaction of the customers with best quality, in-time delivery and services.

GEOWELL'S QUALITY MANAGEMENT SYSTEM (GQMS)

GQMS includes the GEOWELL's 50 years know-how of quality management

Finding CTQ

From the customer's standpoint, find out the critical factors to quality and make the issue.

Measurement

Define the issue quantitatively (Analysis by chart, standard deviation)

Analysis

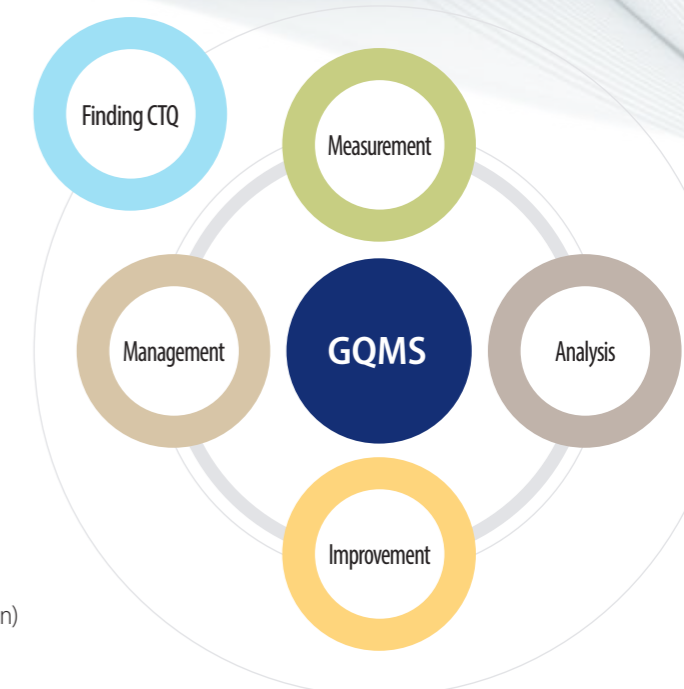
Clarify with the degradation and the reasons thereof (Data in graphic, process ability analysis)

Improvement

Find a solution available and apply (Improvement by test planning, brainstorming)

Management

Rating and institutionalization of new process(standardization)



GEOWELL'S 6S QUALITY MANAGEMENT

SELECTION

The products development and the quality process plan to be made by thoroughly analyzed requirements from the customers.

SOURCING

Receiving inspection for the best materials supply and aggressive management with vendors.

STRUCTURE

Self inspection by PDCA cycle and systematic process improvement

STANDARDIZATION

Exact standardization and implementation of process, works and inspection criteria.

SAFETY

Ensuring the customer's safety in the entire course of designing, production, delivery and installation.

SUBSTANTIATION

Fullest test from the beginning of the products development and the factory inspection and the delivery inspection.